



BUMA TEC CO., LTD.
BUMA Technical Compressor



High Efficiency Cost Saving Quiet Operation

BUMA SCREW AIR COMPRESSOR

Direct Drive Coupling Type BFD250

BUILT ON TRUST

BFD-250

Specification

Surrounding

Atmosphere ----- 760 mmHg
 Working Pressure -----7.0 / 8.0 / 10.0 kgf/cm²
 Max. Temperature ----- 46 °C

Compressor

Free Air Delivery ----- 43.5 m³/min at 7.0 kgf/cm²
 ----- 41.8 m³/min at 8.0 kgf/cm²
 ----- 38.0 m³/min at 10.0 kgf/cm²
 Cooling Method ----- Air Cooled by Cooling Fan
 Outlet Air Temperature ----- Ambient Temp. +15°C
 Operation Control
 Driven Method ----- Direct Driven

Electric Motor

Rating Power ----- 250 kW
 (340Hp)
 Power Source ----- AC380V/3-Phase
 (50Hz)
 Start Method ----- Y-Δ
 Pole / RPM ----- 2 pole / 2975 rpm
 Service Factor ----- 1.2
 IP Class ----- IP 55

Others

Oil Volume -----100 ℓ
 Noise level ----- 85 dBA
 Pipe connection ----- 100A
 Dimension ----- 3360mm x 2000mm x 2000mm
 Weight ----- 4900 Kg

Controller

Compressor Controller ----- Micro Controller
 Power Source ----- AC380V, 3 Phase
 (Built-in Transformer)
 Pressure Control ----- Continuous Pressure Control
 by Pressure Sensor
 Control Method ----- Loading & Unloading Control
 Operation Mode ----- • Automatic Mode
 ----- • Continuous Mode
 ----- • Remote Mode
 (Default: Automatic) • Schedule Mode

Error Detecting Function & Auto-Control Function (LCD & LED Display)

- ◆ System Trip and Warning Function
 - Outlet Air Temperature High
 - Main Motor Overload
 - Fan Motor Overload
 - Pressure & Temperature Sensor Fault
- ◆ Auto-Control Function
 - Stop Delay Function
 - Re-start Pressure
 - Automatic Start

Maintenance Function (LCD & LED Display)

- ◆ Air Filter Change Warning
- ◆ Oil Filter Change Warning
- ◆ Oil Separator Change Warning

Operation Status Display (LCD & LED Display)

- ◆ Outlet Air Pressure
- ◆ Outlet Air Temperature
- ◆ Operation Mode
- ◆ Load / Unload Status

Statistics Function

- ◆ Amot Clock (Automatic Time)
- ◆ Total Operating Hour
- ◆ Load / Unload Hour
- ◆ Set Stop Delay Time



The specifications of this machine are subject to change for improvements.

BFD-250

Components



Electric Motor x 1unit

Type	Y2-315XL-2
Rated Power	250 kw (340 HP)
Service Motor	1.2
Electric Source	AC380, 3-Phase, 50 Hz
Mode of Operation	S1, Continuous Operation Mode
Pole / RPM	2-Pole / 2975 rpm at 50Hz
Cooling Method	Built-in Fan Cooled
Lubrication	CHERROM
Starting Method	Start-Delta



Screw Airend x 1unit

Model	3.47.100008
Compression	Oil Flooded 1-Stage Compression
Rotor Combination	5 x 6 (Male * Female)
Pressure Range	5 ~ 13 bar
Operation Speed	2975 rpm

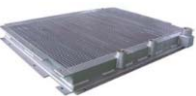


Suction Air Filter x 1unit

Model	BUMA Genuine Filter
Filtration grade	2 μm / Min. 99.8 % (3 ppm)

Lubrication Oil Circulation

Combined Cooler - Aluminum Wing Type Cooler (for Air / Oil Cooling)	1 unit
Oil Filter Housing	1 unit
Oil Filter (BUMA Genuine Filter)	1 unit
Oil Line - Seamless Tubing&O-ring Type Parker Fitting	1 set
Cooling Fan - Low Noise Centrifugal Fan	1 unit
Fan Motor (AC380V)	1 unit



Instrument Panel

Controller (BUMA Controller)	1 unit
Pressure Sensor - Pressure Range : 0 ~ 16 kgf/cm ² - Power Source : DC 24V - Analog Output : DC 0.1 ~ 10 V	1 unit
Temperature Sensor - Outlet Air Temperature	1 unit
Pressure Switch - No. 1: Detecting Compressor Sump Pressure - No. 2: Stand-by for Failure of Pressure Sensor	1 unit
Main EOCR - For Detecting Main Motor Overload	1 unit
Fan EOCR - For Detecting Fan Motor Overload	1 unit
Display LED (Trip) - Main Motor Overload - Discharge Air Temperature High	1 set
Display LED (Warning) - Filter Change - Discharge Temperature High	1 set
Operation Status - LED and Lamp Display (Mode, Load/Unload)	1 set
Start Box - Including Transformer and Converter - Control : DC24V, AC220V	1 set
Emergency Switch	1 unit



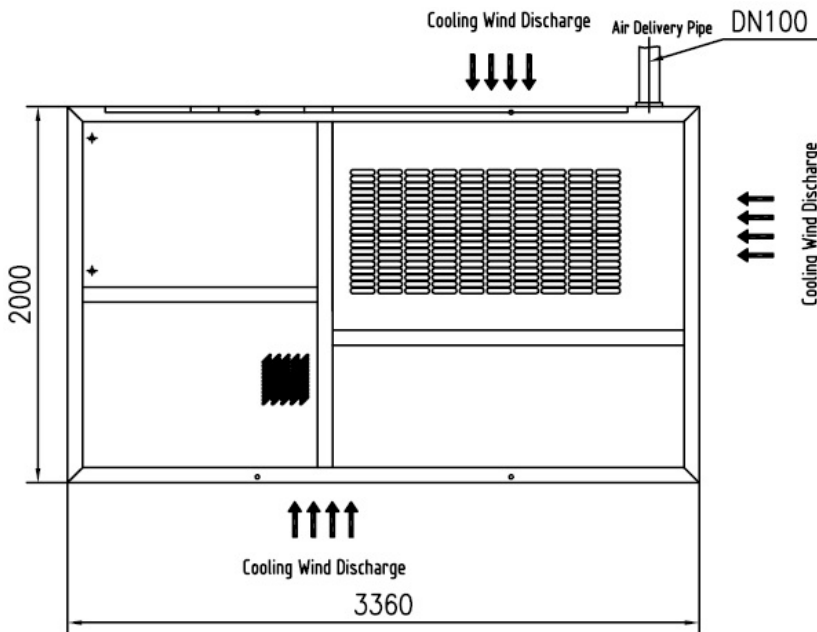
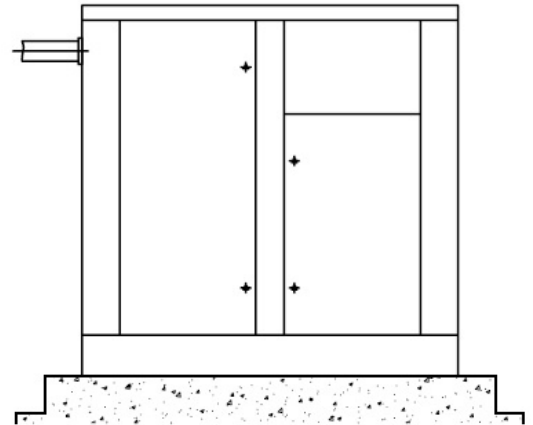
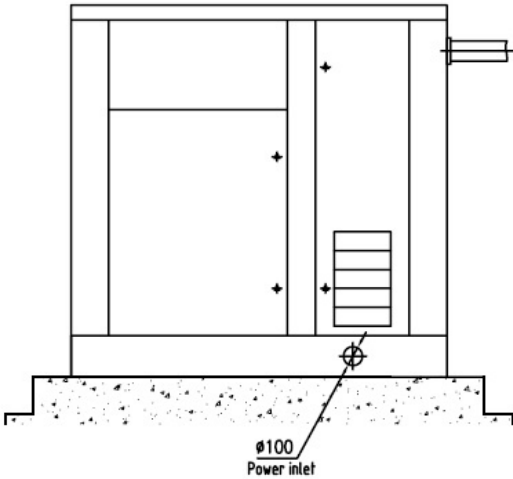
Pneumatic & Electric Valves

Intake Valve (HX DN160)	1 unit
Thermostatic Valve (SA DN40)	1 unit
Minimum Pressure Valve (HX DN100)	1 unit
Solenoid Valve - For Controlling Intake Valve and Purge Valve	1 unit
Safety Valve - A28X-16T (DN50)	1 unit
Purge Valve (HX)	1 unit

BFD250

Appearance Drawing

Unit: mm



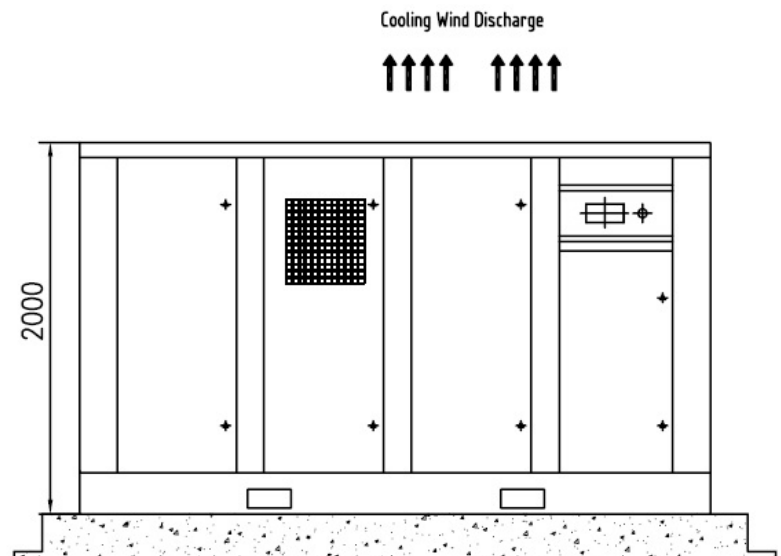
Dimension

Length : 3,360 mm

Width : 2,000 mm

Height : 2,000 mm

Weight : 4,900 Kg



BUILT ON TRUST

www.bumatec.com



CHINA FACTORY
WEST OF JIUJING ROAD,
DANYANG ECONOMIC DEVELOPMENT ZONE,
JIANGSU, CHINA (Zip Code: 212300)
TEL: +86-551-6220030
FAX: +86-511-86220032
Email: buma@bumatec.com

KOREA OFFICE
291 1637BEON-GIL, SEOBU-RO, JUCHON-MYON,
GIMHAE-CITY, GYEONGNAM, KOREA (621-843)
TEL: +82-55-337-9891~3
FAX: +82-55-337-9894
Email: bumace@bumace.com